



93<sup>rd</sup> National Safety Council Congress and Expo 2005

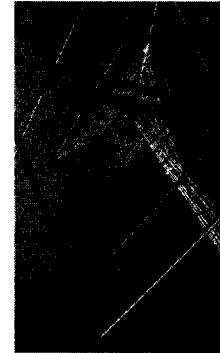
## “Safety From the Ground Up”

Don Doty – Vice Chairman NATE

Rob Medlock – Area Director Cleveland OSHA Office

## Overview

- Industry Fatalities
- How Ignoring Established Practices Costs Lives
- The Broken Link in the Chain of Safety
- Safety from the Ground Up



## Industry Fatalities

- The most safety conscious companies can still experience accidents, but
- A review of the statistics Rob has provided demonstrates a common thread in almost all instances,
- Established safety practices were not being followed

## Riding the Line

- One example of how violation of established practices leads to fatalities
- Riding the line, when done properly, is the safest method of ascending or descending a tower:
  - Reduces fatigue
  - Diminishes repetitive motion injuries, which increases longevity of experienced climbers
  - Makes crews more efficient without placing them at risk

## Establishing Procedures

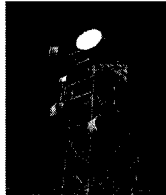
- NATE and OSHA spent over three years establishing OSHA Directive CPL 2-1.29, released in 1999, authorizing procedures to ride the line safely.
- A revised version, CPL 2-1.36 was issued in 2002.
- OSHA is in agreement that this practice is safe when done properly.

## The Cost of Ignoring Established Practices

- The worst tower fatalities over the last three years all featured someone riding the line while ignoring established practices and procedures
- A review of those companies shows that they did not use the proper equipment and that they ignored the standards the industry, via NATE, established through OSHA.

### **Broken Link in the Chain of Safety**

- Who is responsible for safety on Tower Sites?
  - Tower Crew?
  - Contractor?
  - Project Manager?
  - Carrier?
  - Tower Owner?
- Answer: All of the Above



### **Where Does the Breakdown in Safety Occur?**

- Do you know who is working on your tower?
- Hiring unqualified climbers jeopardizes lives
- Multiple layers of contractors in a project make safety enforcement more difficult

### **What Can the Industry Do?**

- Each of the players mentioned earlier has their own role to play
- NATE represents the tower erection, service and maintenance industry
- The following is a summary of what our industry has done to date through NATE

### **Safety from the Ground Up**

- NATE has identified the areas in which 99% of all tower technician accidents occur
- Practices and procedures to address those areas of concern have been developed
- These efforts have resulted in resources and materials to assist tower erection, service and maintenance companies in safeguarding their employees.

### **NATE/OSHA Partnership**



- An agreement to meet the industry's highest standards of safety
- Detailed and Documented Site Safety Audits
- Focused Inspection List
- Specified Levels of Training and Education

### **Further Efforts with OSHA**

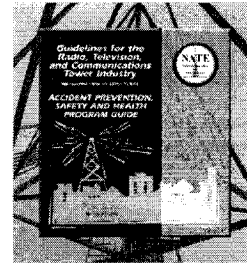
- Expansion of Regional Partnership to the National Level
- Development of Industry Specific OSHA Training Courses
- Increased Awareness Among OSHA Offices of Tower Industry Practices and Standards

## NATE Tower Climber Fall Protection Training Standard



- First National Training Standard for Tower Climbers
- Establishes standards for being trained as:
  - Authorized Climber
  - Competent Climber
  - Competent Rescuer

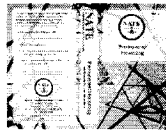
## Accident Prevention, Safety and Health Program Guide



- Industry Specific
- Recognized by OSHA as the Industry Standard
- Includes Fall Prevention, Compliance, Education, Training and Hazard Identification Information

## Safety Videos

- Climber Orientation
- Personnel Hoisting
- Gin Pole Procedures
- RF Awareness (currently under production)
- Available in DVD or VHS format



## Safety Resources

- Hoist Operators Educational Requirements Manual
  - Provides minimum requirements for becoming a qualified hoist operator covering:
    - Hoist Systems
    - Operator Qualifications
    - Rigging Methods and Practices
    - Installation and Inspection
    - Standards and Regulations

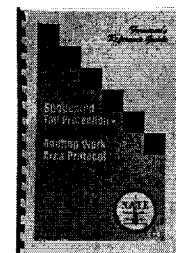
## Safety Resources



- Site Signage Package
  - Provides Specific Examples of Required Signage
  - Situation Specific
  - Laminated Flip Cards for Field Use

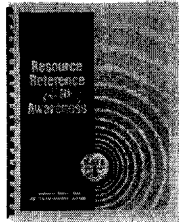
## Safety Resources

- NATE Rooftop Protocol Manual
  - OSHA Standards and Regulations
  - Fall Prevention Systems
  - Warning and Monitoring Systems



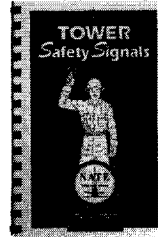
## Safety Resources

- RF Awareness Manual
  - RF Safety Awareness
  - Metering Devices
  - OSHA Measurement Compliance



## Safety Resources

- Tower Safety Signals Handbook
  - Audible and Hand Signals including:
    - Crane Hand Signals
    - Hoist Hand Signals
    - Forklift and Helicopter Hand Signals



## Safety Resources

- Glossary of Tower and Communications Terminology
  - Extensive Collection of Industry Terms
  - Promotes Better Communication
  - Establishes Uniformity of Terms



## NATE Safety Checklists



- Tower Owner Safety Checklist
  - Recommended voluntarily guidelines for tower owners and operators to help enhance tower climber safety

## NATE Safety Checklists



- Qualified Contractor Evaluation Checklist
  - Helps carriers, owners and operators determine contractor qualifications to conduct tower erection, service and maintenance work safely.

## NATE 2006 Conference and Exposition



- 11th Annual Event
- February 13-16, 2006
- Orlando, Florida
- Disney Coronado Springs Resort
- Educational Sessions
- Industry Product and Services Exhibition
- Networking Opportunities

## *Tower Times*

- The official magazine of NATE
- Published monthly
- Annual subscription rate of \$50
- Over 1,500 distribution
- NATE activities and reports, safety and health articles, product reviews, supplier listings, editorials, state-by-state business requirements, OSHA updates, legal reports
- Web-site links



## NATE Insurance Program



- Tailored to meet the needs of the tower industry
- Designed in conjunction with AIG
- Members can utilize existing agents

## Continuing Education



- Sponsored by NATE at the association's annual event and conducted by private and public sector specialists, educational seminars are either product or process specific
- Roundtable or panel discussions address specific industry safety problems and issues

## Strong Voice in Washington

- Maintain direct contact with OSHA and other Regulatory Agencies
- Establish relationships with key members of Congress
- Provide a unified voice for the tower industry
- Keeps members informed of issues effecting the industry



## National Access Legal Counsel



- Providing legal counsel for the Association
- Available to assist NATE member firms with legal issues
- Offices centrally located
- Experienced in industry issues
- Provides monthly *Tower Times* article relating to legal issues affecting the industry and small business

## NATE Mission Statement

- To pursue, formulate and adhere to uniform standards of safety to ensure the continued well being of tower personnel.
- To educate the general public, applicable government agencies and clients on continued progress toward safer standards within the industry.
- To keep all members informed of issues relevant to the industry.

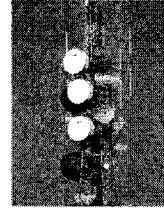
## NATE Mission Statement

(continued)

- To provide a unified voice for tower erection, service and maintenance companies.
- To facilitate effective safety training for the industry.

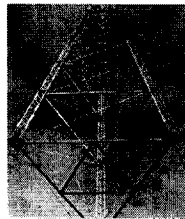
## NATE Snapshot

- Formed in 1995 with 62 founding members
- NATE has grown to over 500 member firms
- Membership consists of:
  - Tower Erection, Service and Maintenance Companies
  - Manufacturers
  - Tower Owners
  - Carriers
  - Contractors
  - Engineers
  - Consultants



## Membership Involvement

- NATE is driven by Membership Involvement
  - Board of Directors
  - Committees
    - OSHA Relations
    - Safety and Education
    - Trade Show
    - Membership
    - Legislative and Regulatory
  - Trade Show Participation
  - NATE Voting Session



National Association of Tower Erectors  
8 Second Street, SE  
Watertown, SD 57201  
1-888-882-5865  
1-605-886-5184 (fax)  
nate@natehome.com  
www.natehome.com